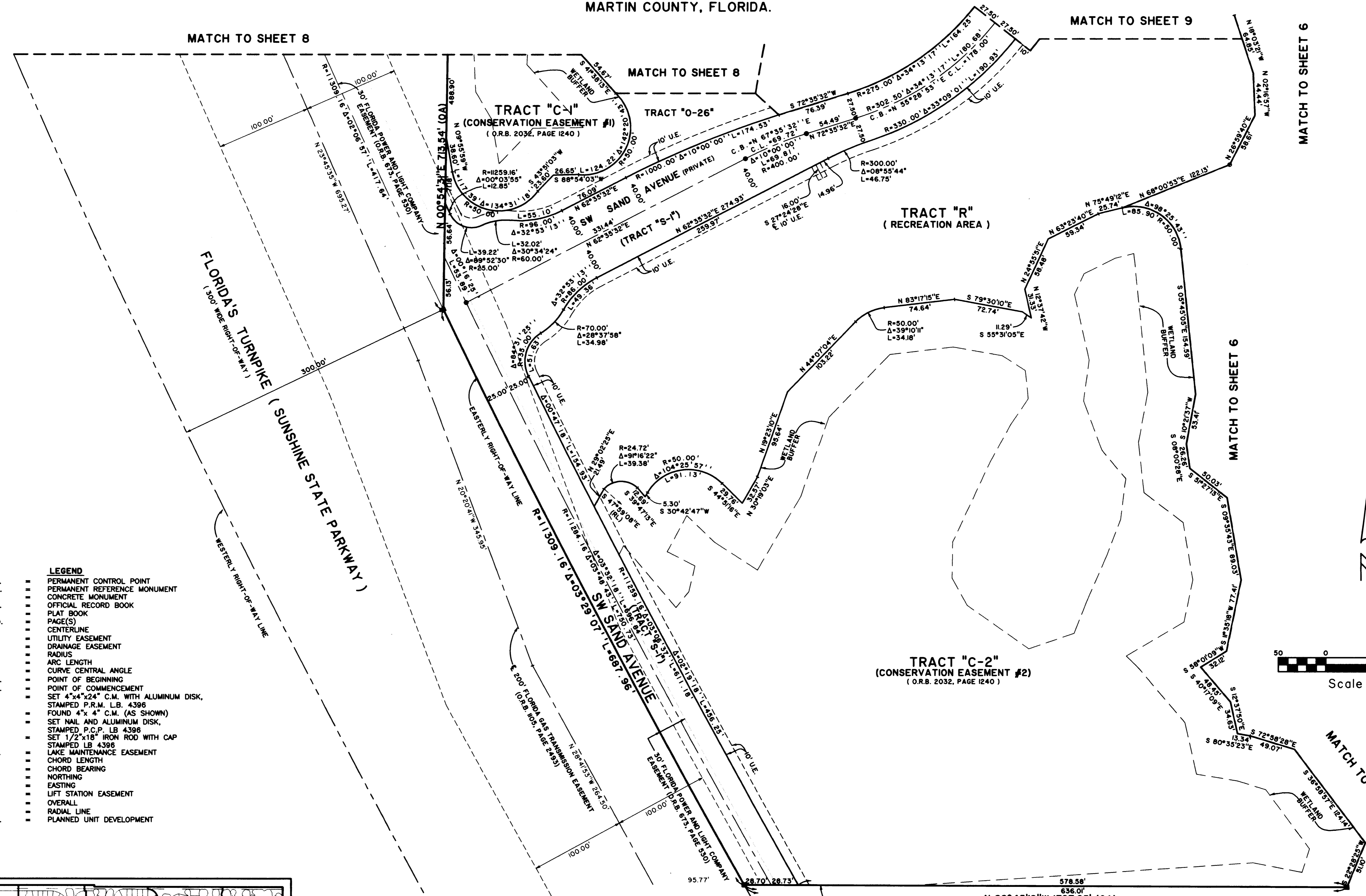
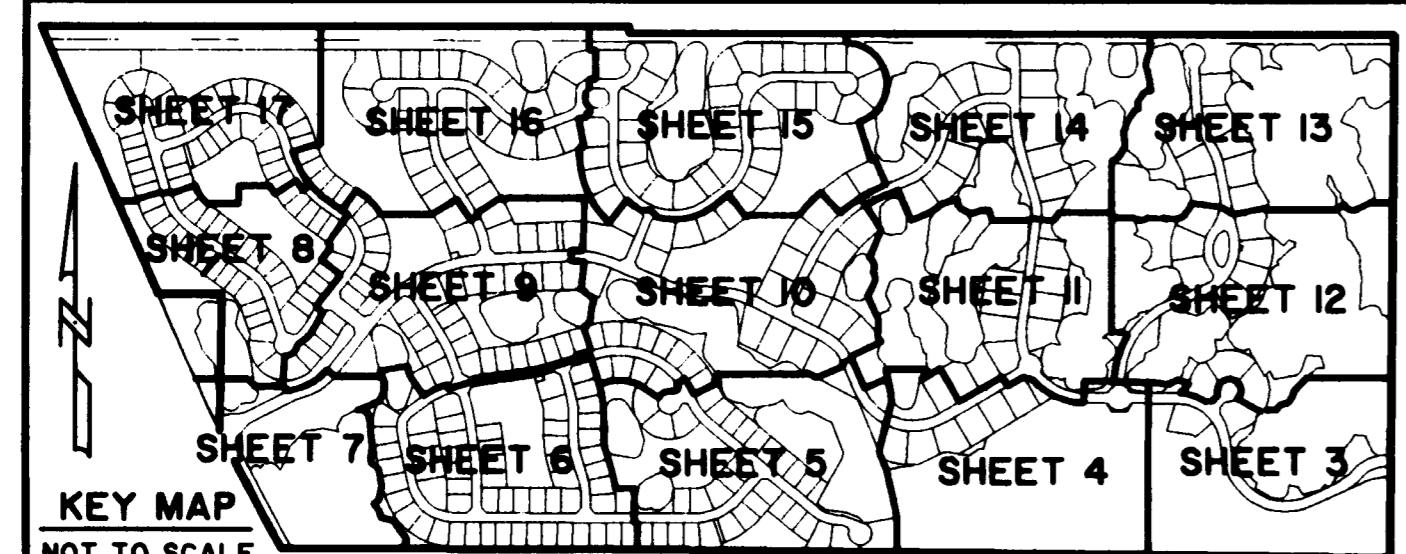
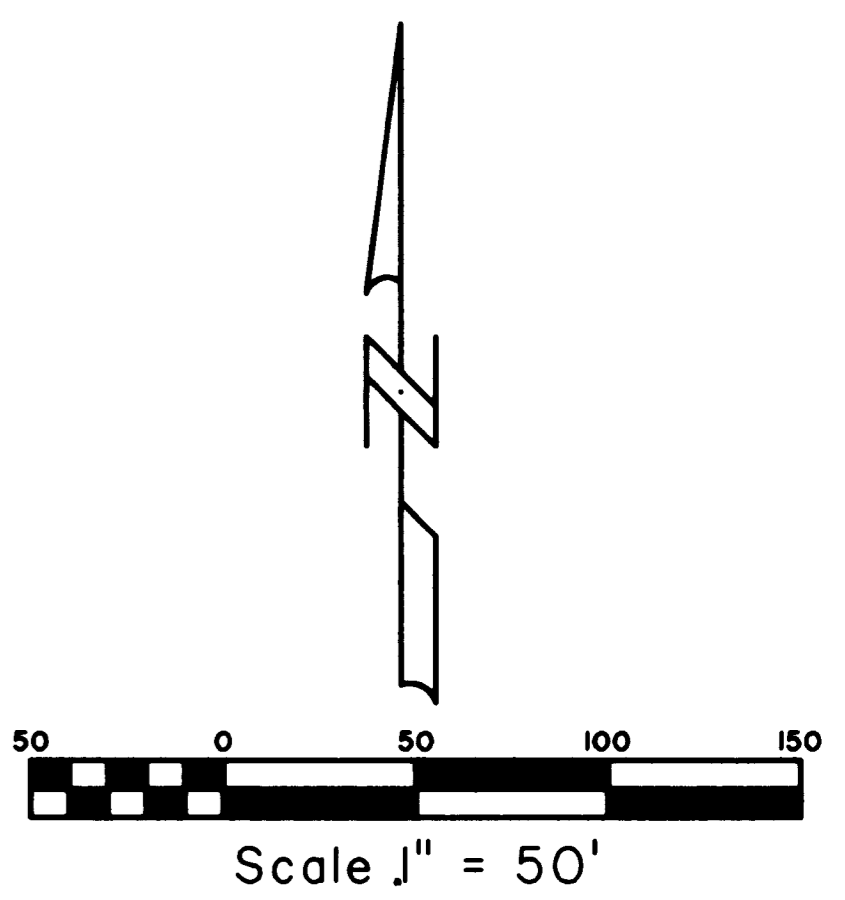


SAND TRAIL P.U.D.

LYING IN SECTIONS 2 AND 3, TOWNSHIP 38 SOUTH, RANGE 40 EAST,
MARTIN COUNTY, FLORIDA.



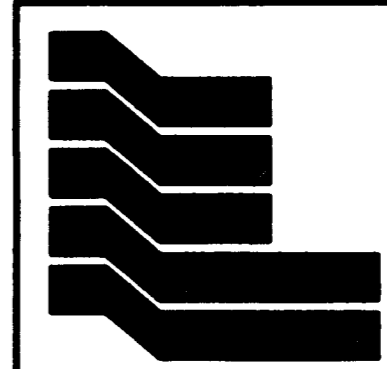
- LEGEND**
- P.C.P. ■ PERMANENT CONTROL POINT
 - P.R.M. ■ PERMANENT REFERENCE MONUMENT
 - C.M. ■ CONCRETE MONUMENT
 - O.R.B. ■ OFFICIAL RECORD BOOK
 - P.B. ■ PLAT BOOK
 - PG(S) ■ PAGE(S)
 - C ■ CENTERLINE
 - U.E. ■ UTILITY EASEMENT
 - D.E. ■ DRAINAGE EASEMENT
 - R ■ RADIUS
 - L ■ ARC LENGTH
 - Δ ■ CURVE CENTRAL ANGLE
 - P.O.B. ■ POINT OF BEGINNING
 - P.O.C. ■ POINT OF COMMENCEMENT
 - SET 4"x4"x24" C.M. WITH ALUMINUM DISK, STAMPED P.R.M. L.B. 4396
 - FOUND 4"x4" C.M. (AS SHOWN)
 - SET NAIL AND ALUMINUM DISK, STAMPED P.C.P. LB 4396
 - SET 1/2"x18" IRON ROD WITH CAP, STAMPED LB 4396
 - L.M.E. ■ LAKE MAINTENANCE EASEMENT
 - C.L. ■ CHORD LENGTH
 - C.B. ■ CHORD BEARING
 - N ■ NORTHING
 - E ■ EASTING
 - L.S.E. ■ LIFT STATION EASEMENT
 - OA ■ OVERALL
 - RL ■ RADIAL LINE
 - P.U.D. ■ PLANNED UNIT DEVELOPMENT



NOTE: SEE SHEET 2 OF 17 FOR SURVEYOR'S NOTES

N 89°45'19"W 1727.25' (OA)
NORTH LINE CRANE CREEK COUNTRY CLUB PHASE I AND
SOUTH LINE OF SECTION 3, TOWNSHIP 38 S., RANGE 40 E.

CRANE CREEK COUNTRY CLUB PHASE I
(PLAT BOOK 9, PAGE 36)



Landmark Surveying & Mapping Inc.
1850 Forest Hill Boulevard
Ph. (561) 433-5405 Suite 100 W.P.B. Florida
LB # 4396

SAND TRAIL P.U.D.

G:\LIBRARY\EPM\13\005\0632\06325_7 Not Not 05 15:57:08 2007 PLOTTED BY LESLIE C. BISPOTT